

shading

THE
outdoor
ALCHEMIST

Corradi
OUTDOOR LIVING SPACE

Time to...

**Enjoy Your
Outdoors**

- 2. Our Solutions
- 4. Awnings
 - 7. Klip and Klip Pod
 - 13. Svet
 - 17. Shan
 - 21. Feng
 - 25. Frame
- 31. Defense Shade Sail
- 34. Fabric Collection
- 36. Motorization
- 38. Product Comparison Overview
- 41. Why Corradi?



Enhanced Outdoor Living Experience

Exceptional Quality and Protection

Versatile and Customizable Designs

Energy Efficiency & Environmental Consciousness

Experience the boundless potential of your outdoor space with Corradi USA. Whether you're looking to create a comfortable oasis in your backyard, protect your customers from the elements at your restaurant, or add a touch of luxury to a public space, our comprehensive line of shading products has you covered.

From retractable pergolas, screens, and awnings, to shade sails and louvered roofs, our products are designed to seamlessly integrate into any exterior environment. Transform your outdoor patio into a living space to be enjoyed all year round.



Shading Systems

Shade and the Art of Optimizing It

Sculpt the light and shadow of your outdoor space with Corradi's premier awning line. Our meticulously designed retractable shading products have the ability to enhance any patio. From the sleek casing of the highly sought-after Shan Awning to the nautical elegance of the Defense Shade Sail, Corradi Shading Systems are an essential part of modern outdoor living.



Klip



Svet



Feng



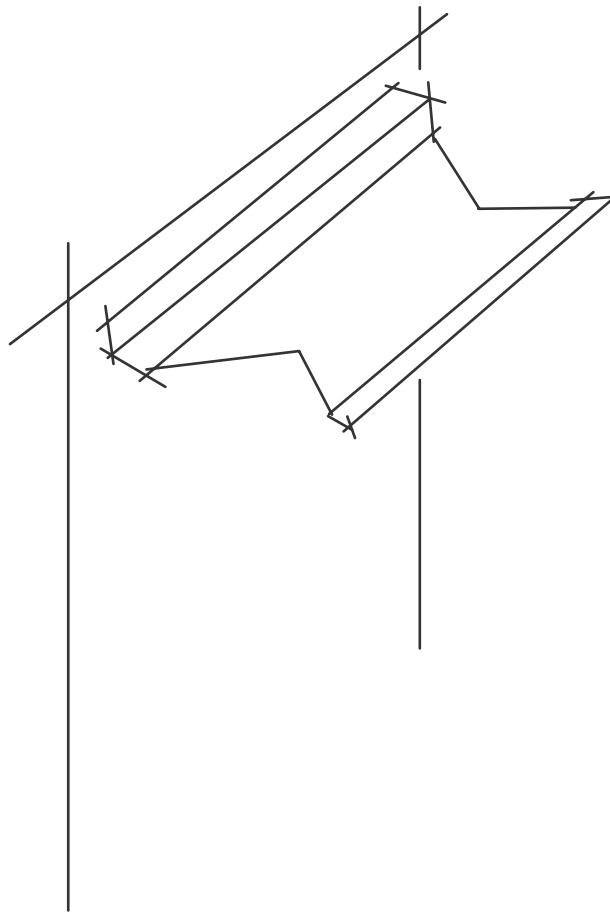
Shan



Frame



Defense





Klip & Klip Pod

Retractable Awning
by ShadeLab



Klip is the square bar awning that adds innovation to tradition. A classic open-roll awning with a new design, ensuring functionality and versatility. Also offered in a Pod version that is equipped with a protective case.



Svet | Ross Howard



KLIP Technical Data



Klip is a classic open-roll retractable awning with an advanced design built with a square bar attachment in the back and a round front bar. The components have been refined to create functionality never seen before in a square bar attached awning. An optional protective hood is available, which enables adjustment for any installation environment. Klip belongs to Shadelab's family of square bar attached awnings that have reinvented the category. Previously, they were only functional. Now they are enchanting architectural features. The simplicity and flexibility of ShadeLab's avant-garde concepts enables the creation of shading solutions that Corradi USA offers to reflect your personal style and desired comfort.

Features

- » OPEN ROLL AWNING
- » MOTORIZED OR MANUAL OPERATION
- » CONTINUOUS MICROMETRIC PITCH REGULATION
- » AVAILABLE WITH PROTECTIVE HOOD
- » 316 GRADE STAINLESS STEEL SCREWS AND PINS
- » WALL, CEILING, OR ROOF INSTALLATION
- » PATENTED ITALIAN DESIGN

ARM SIZE & WIDTH RANGE

Projection*	Max. width	Style
6'6" (78")	360" / 30'	Urban
8'4" (100")	360" / 30'	Urban
10' (120")	360" / 30'	Urban
11'6" (138")	360" / 30'	Katana

*Maximum projection indicated is calculated with arms at 0° pitch, perpendicular to the mounted wall. Increasing the pitch will decrease the projection when measured in a straight/perpendicular line from the mounted wall.

MINIMUM WIDTH PER ARM COUNT

Projection*	2 Arms	3 Arms	4 Arms
6'6" (78")	102"	149"	195"
8'4" (100")	122"	178"	241"
10' (120")	148"	214"	280"
11'6" (138")	167"	243"	319"

MOTORIZATION

SOMFY® 500 SERIES - RTS OR STANDARD

MANUAL GEAR & CRANK



FRAME COLORS

POWDER COATING* **

Aluminum extrusions are painted with certified Qualicoat cycle epoxy powders.



*Custom RAL colors also available.

Plastic parts are only available in limited colors.

Differences in color tones may occur in this brochure due to production technique, therefore these finish images should not be used for final production specifications.

FABRICS

Corradi USA offers the highest quality of acrylic fabrics for retractable awnings.

PARA TEMPOTEST

Vibrant and durable solution-dyed acrylic fabrics.

ACRYLICS

STARLIGHT FR

ADDITIONAL FABRICS*

Sunbrella

*Available upon request.

URBAN ARM: An unprecedented retractable arm design made from the highest quality raw materials and the advanced technology of the **DAT SYSTEM** (Dynamic Arm Torsion System) come together to make the Urban arm a masterpiece.

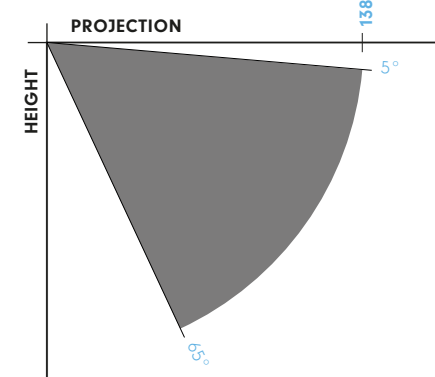
KATANA ARM: Specifically designed for larger projections (11'6" and 13'6"). All of Katana's differences are internal as the exterior look and smooth function of the Katana arm is identical to Urban.



The distance between fabric and arm increases when deployed to protect the fabric.



PITCH





Klip Pod | Budget Blinds of Wichita Falls



KLIP POD Technical Data



Klip Pod is a Shadelab semi cassette awning developed from the existing Klip. Its unique round protective case is designed to protect the awning fabric when it's retracted from rain and other contaminants. It eliminates the need for a protective hood. The rounded terminal profile of Klip Pod completes the sleekness of its design.

Features

- » SEMI-CASSETTE AWNING
- » MOTORIZED OPERATION
- » CONTINUOUS MICROMETRIC PITCH REGULATION
- » 316 GRADE STAINLESS STEEL SCREWS AND PINS
- » WALL, CEILING, OR ROOF INSTALLATION
- » PATENTED ITALIAN DESIGN

ARM SIZE & WIDTH RANGE

Projection*	Max. width	Style
6'6" (78")	212" / 17'8"	Urban
8'4" (100")	212" / 17'8"	Urban
10' (120")	212" / 17'8"	Urban
11'6" (138")	212" / 17'8"	Katana

*Maximum projection indicated is calculated with arms at 0° pitch, perpendicular to the mounted wall. Increasing the pitch will decrease the projection when measured in a straight/perpendicular line from the mounted wall.

MINIMUM WIDTH PER ARM COUNT

Projection*	2 Arms
6'6" (78")	102"
8'4" (100")	122"
10' (120")	148"
11'6" (138")	167"

MOTORIZATION

SOMFY® 500 SERIES, RTS OR STANDARD.



FRAME COLORS

POWDER COATING* **

Aluminum extrusions are painted with certified Qualicoat cycle epoxy powders.



*Custom RAL colors also available.

Plastic parts are only available in limited colors.

Differences in color tones may occur in this brochure due to production technique, therefore these finish images should not be used for final production specifications.

FABRICS

Corradi USA offers the highest quality of acrylic fabrics for retractable awnings.

PARA TEMPOTEST

Vibrant and durable solution-dyed acrylic fabrics.

ACRYLICS
STARLIGHT FR

ADDITIONAL FABRICS*

Sunbrella

*Available upon request.

URBAN ARM: An unprecedented retractable arm design made from the highest quality raw materials and the advanced technology of the **DAT SYSTEM** (Dynamic Arm Torsion System) come together to make the Urban arm a masterpiece.

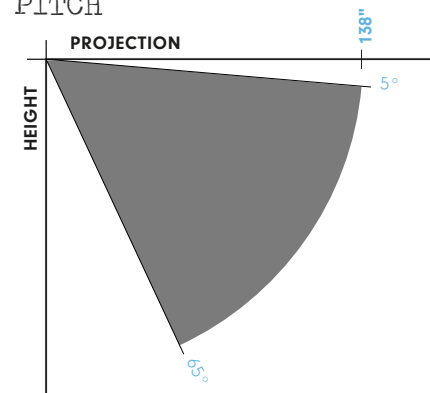
KATANA ARM: Specifically designed for larger projections (11'6" and 13'6"). All of Katana's differences are internal as the exterior look and smooth function of the Katana arm is identical to Urban.



The distance between fabric and arm increases when deployed to protect the fabric.



PITCH





Svet

Retractable Awning
by ShadeLab



Svet is an aesthetic revolution in the awning world with its premium design that incorporates square profiles and cutting edge performance. Its innovative features complement both new and existing architecture.



Svet | Opdyke Awning, Inc.



SVET Technical Data



Svet is an original work of art. Cutting-edge design and performance make it blend perfectly with contemporary urban architecture. It is particularly well suited to shade the large areas of bars, restaurants and resorts. All of Svet's hardware is stainless steel and the roller tube bracket seamlessly integrates with the square bar. This eliminates the need for external bolted-on brackets, which enhances its linear simplicity. As always, Svet is a product of Shadelab patented technology and classic designs created by true shading connoisseurs.

Features

- » OPEN ROLL AWNING
- » MOTORIZED WITH CMO (CONTROL MOTOR OVERRIDE) OPTION
- » CONTINUOUS MICROMETRIC PITCH REGULATION
- » AVAILABLE WITH PROTECTIVE HOOD
- » 316 GRADE STAINLESS STEEL SCREWS AND PINS
- » WALL, CEILING, OR ROOF INSTALLATION
- » FRONT BAR LED LIGHT OPTION
- » PATENTED ITALIAN DESIGN

WIDTH RANGE

Projection*	Max. width	Style
6'6" (78")	360" / 30'	Urban
8'4" (100")	360" / 30'	Urban
10' (120")	360" / 30'	Urban
11'6" (138")	360" / 30'	Katana
13'6" (162")	360" / 30'	Katana

*Maximum projection indicated is calculated with arms at 0° pitch, perpendicular to the mounted wall. Increasing the pitch will decrease the projection when measured in a straight/perpendicular line from the mounted wall.

MINIMUM WIDTH PER ARM COUNT

Projection*	2 Arms	3 Arms	4 Arms
6'6" (78")	80"	146"	191"
8'4" (100")	119"	175"	240"
10' (120")	148"	214"	279"
11'6" (138")	168"	243"	319"
13'6" (162")	190"	276"	362"

SVET FRONT BAR LED LIGHTING OPTION



FRAME COLORS

POWDER COATING* **

Aluminum extrusions are painted with certified Qualicoat cycle epoxy powders.



*Custom RAL colors also available.

Plastic parts are only available in limited colors.

Differences in color tones may occur in this brochure due to production technique, therefore these finish images should not be used for final production specifications.

FABRICS

Corradi USA offers the highest quality acrylic fabrics for retractable awnings.

PARA TEMPOTEST

Vibrant and durable solution-dyed acrylic fabrics.

ACRYLICS

STARLIGHT FR

ADDITIONAL FABRICS*

Sunbrella

*Available upon request.

URBAN ARM: An unprecedented retractable arm design made from the highest quality raw materials and the advanced technology of the **DAT SYSTEM** (Dynamic Arm Torsion System) come together to make the Urban arm a masterpiece.

KATANA ARM: Specifically designed for larger projections (11'6" and 13'6"). All of Katana's differences are internal as the exterior look and smooth function of the Katana arm is identical to Urban.



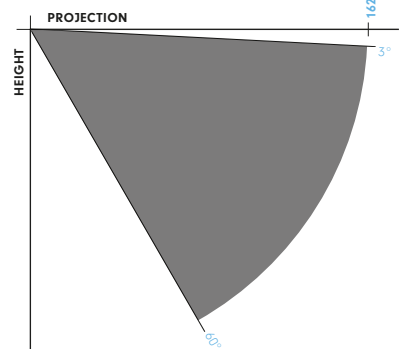
The distance between fabric and arm increases when deployed to protect the fabric.



MOTORIZATION

SOMFY® 500 SERIES, RTS OR STANDARD. Override CMO is available

PITCH





Shan

Retractable Awning
by ShadeLab



A state-of-the-art awning thanks to its square shape, the Shan is a fully enclosed cassette awning. Its square box blends seamlessly with contemporary architecture, while its sleek design adds a touch of modern elegance to any space, providing both practicality and aesthetic appeal.



Shan | Advanced Blinds and Awnings



SHAN Technical Data



Shan is majestic, surpassing all expectations. A timeless classic with a traditional architectural box design that blends perfectly with surrounding architecture. More importantly, Shan is an original design that is often imitated but never equaled. It is the ideal solution for shading large residential and commercial spaces. Everyone loves a comfortable outdoor space. Shan's classic good looks and inspiring lines invites you outdoors.

Features

- » FULL CASSETTE AWNING
- » ACQUASTOP SYSTEM
- » MOTORIZED ONLY
- » CONTINUOUS MICROMETRIC PITCH REGULATION
- » 316 GRADE STAINLESS STEEL SCREWS AND PINS
- » WALL MOUNT ONLY
- » PATENTED ITALIAN DESIGN
- » RED DOT DESIGN AWARD WINNER

WIDTH RANGE

Projection*	Max. width	Style
6'6" (78")	276" / 23'	Urban
8'4" (100")	276" / 23'	Urban
10' (120")	276" / 23'	Urban
11'6" (138")	276" / 23'	Katana
13'6" (162")	276" / 23'	Katana

*Maximum projection indicated is calculated with arms at 0° pitch, perpendicular to the mounted wall. Increasing the pitch will decrease the projection when measured in a straight/perpendicular line from the mounted wall.

MINIMUM WIDTH PER ARM COUNT

Projection*	2 Arms	3 Arms
6'6" (78")	97"	145"
8'4" (100")	117"	174"
10' (120")	137"	206"
11'6" (138")	159"	236"
13'6" (162")	179"	265"

MOTORIZATION

SOMFY® OREA – Torque Sensing Motor



FRAME COLORS

POWDER COATING* **

Aluminum extrusions are painted with certified Qualicoat cycle epoxy powders.



*Custom RAL colors also available.

Plastic parts are only available in limited colors.

Differences in color tones may occur in this brochure due to production technique, therefore these finish images should not be used for final production specifications.

FABRICS

Corradi USA offers the highest quality of acrylic fabrics for retractable awnings.

PARA TEMPOTEST

Vibrant and durable solution-dyed acrylic fabrics.

ACRYLICS

STARLIGHT FR

ADDITIONAL FABRICS*

Sunbrella

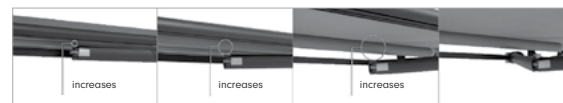
*Available upon request.

URBAN ARM: An unprecedented retractable arm design made from the highest quality raw materials and the advanced technology of the **DAT SYSTEM** (Dynamic Arm Torsion System) come together to make the Urban arm a masterpiece.

KATANA ARM: Specifically designed for larger projections (11'6" and 13'6"). All of Katana's differences are internal as the exterior look and smooth function of the Katana arm is identical to Urban.

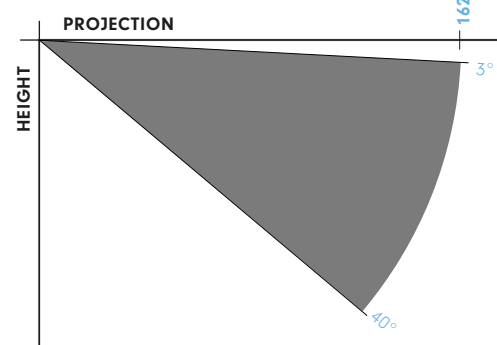


The distance between fabric and arm increases when deployed to protect the fabric.



ACQUASTOP SYSTEM: Favors a perfect adherence of the cassette to the wall, blocking the flow of water in case of rain.

PITCH





Feng

Retractable Awning

by ShadeLab



Breaking the patterns of the shading industry with its round cassette, the Feng awning offers unique design elements with cutting-edge features that redefine outdoor comfort and style. Its innovative design not only exemplifies superior shade, but also enhances the ambiance of any patio.



Feng | Artivo Window Coverings



FENG ARM & CASSETTE LED LIGHTING OPTIONS



FENG Technical Data



Feng is a product of thinking outside the box. It is an unparalleled part of the retractable awning revolution and impresses with its distinctive round design. It creates spacious shade to relax in complete comfort. Feng gives you more. During the day it gives shade; at night it has the option to be illuminated with LED lights, that can be included with the cassette and the arms. Compliments are guaranteed. Feng is always motorized, with the Somfy Orea torque sensing motor, easy to control with either a remote or wall switch. Strong and resilient, Feng exceeds demands for reliability. Quality is its essence, as proven in its winning the Good Design Award.

Features

- » FULL CASSETTE AWNING
- » ACQUASTOP SYSTEM
- » MOTORIZED ONLY
- » CONTINUOUS MICROMETRIC PITCH REGULATION
- » 316 GRADE STAINLESS STEEL SCREWS AND PINS
- » WALL MOUNT ONLY
- » ARM LED LIGHT OPTION
- » CASSETTE LED LIGHT OPTION
- » PATENTED ITALIAN DESIGN
- » RED DOT DESIGN AWARD WINNER

ARM SIZE & WIDTH RANGE

Projection*	Max. width	Style
6'6" (78")	276" / 23'	Urban
8'4" (100")	276" / 23'	Urban
10' (120")	276" / 23'	Urban
11'6" (138")	276" / 23'	Katana

*Maximum projection indicated is calculated with arms at 0° pitch, perpendicular to the mounted wall. Increasing the pitch will decrease the projection when measured in a straight/perpendicular line from the mounted wall.

MINIMUM WIDTH PER ARM COUNT

Projection*	2 Arms	3 Arms
6'6" (78")	105"	153"
8'4" (100")	123"	180"
10' (120")	144"	212"
11'6" (138")	162"	239"

MOTORIZATION

SOMFY® OREA – Torque Sensing Motor



FRAME COLORS

POWDER COATING* **

Aluminum extrusions are painted with certified Qualicoat cycle epoxy powders.



*Custom RAL colors also available.

Plastic parts are only available in limited colors.

Differences in color tones may occur in this brochure due to production technique, therefore these finish images should not be used for final production specifications.

FABRICS

Corradi USA offers the highest quality of acrylic fabrics for retractable awnings.

PARA TEMPOTEST

Vibrant and durable solution-dyed acrylic fabrics.

ACRYLICS
STARLIGHT FR

ADDITIONAL FABRICS*

Sunbrella

*Available upon request.

URBAN ARM: An unprecedented retractable arm design made from the highest quality raw materials and the advanced technology of the **DAT SYSTEM** (Dynamic Arm Torsion System) come together to make the Urban arm a masterpiece.

KATANA ARM: Specifically designed for larger projections (11'6" and 13'6"). All of Katana's differences are internal as the exterior look and smooth function of the Katana arm is identical to Urban.

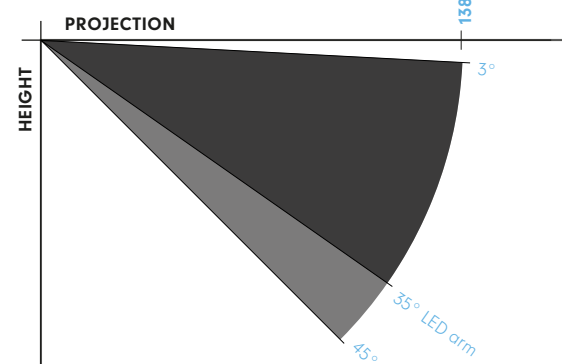


The distance between fabric and arm increases when deployed to protect the fabric.



ACQUASTOP SYSTEM: Favors a perfect adherence of the cassette to the wall, blocking the flow of water in case of rain.

PITCH





Frame

Retractable Awning
by ShadeLab



Frame is the shading product that introduces a new concept of design where innovation meets cutting-edge technology. With fabric that runs horizontally on tracks rather than retracting arms, it offers unparalleled adaptability and functionality.

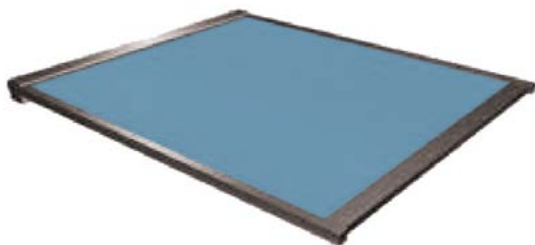




FRAME Installation Options

Frame open and closed

Maximum size 236" (19'8") x 236" (19'8")



Frame Stand open and closed

Maximum size 197" (16'5") x 197" (16'5")



FRAME Technical Data



Frame is a horizontal shade that operates using tensioned tracks instead of retracting arms. This creates a smooth functional element and an architectural form that brings your outdoor space together. It provides the adaptability to shade numerous applications including windows. It is the ultimate solution for overhead shading. Frame's simple charm makes your outdoor space more functional and fascinating.

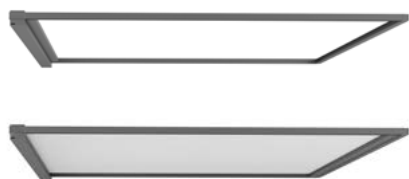
Frame introduces a new design concept to tensioned shading. Its cutting-edge tensioning system has gas pistons, a high strength drive belt and a full cassette, which ensures quiet operation and protects Frame from the elements. Available only in a motorized version that can reach sizes up to 236" x 236". It can be installed directly as the Frame on a horizontal or pitched surface with 3 different bracket options (3.4", 4.1", and 4" - 19.7" adjustable), or it can be mounted to a wall in the back and held up by the Frame Stand, a supporting front structure option. The innovative front profile closes the structure perimeter and contains the terminal profile, making Frame's design unique and unmistakable, as well as providing more stable structural options.

Frame, another architectural work of art from ShadeLab offered in North America exclusively through Corradi USA.

Features

- » **MOTORIZED ONLY**
- » **WALL MOUNT WITH STAND OPTION**
- » **INTEGRATABLE TO PRE-DESIGNED OR EXISTING STRUCTURES**
- » **FEET AND BRACKETS PROVIDED**
- » **TENSIONED GAS PISTONS**
- » **MAXIMUM SIZE FOR FRAME 236"(19'8") X 236"(19'8")**
- » **MAXIMUM SIZE FOR FRAME WITH STAND 197"(16'5") X 197"(16'5")**
- » **60° MAXIMUM PITCH**
- » **316 GRADE STAINLESS STEEL SCREWS AND PINS**
- » **PATENTED ITALIAN DESIGN**

Frame open and closed
Maximum size 236" (19'8") x 236" (19'8")



Frame Stand open and closed
Maximum size 197" (16'5") x 197" (16'5")



FRAME COLORS

POWDER COATING* **

Aluminum extrusions are painted with certified Qualicoat cycle epoxy powders.



*Custom RAL colors also available.

Plastic parts are only available in limited colors.

Differences in color tones may occur in this brochure due to production technique, therefore these finish images should not be used for final production specifications.

FABRICS

Corradi USA offers the highest quality of acrylic fabrics for retractable awnings.

PARA TEMPOTEST USA

Vibrant and durable solution-dyed acrylic fabrics.

Para Tempotest fabrics can be used up to a 15' (180") x 15' (180") maximum on the Frame system.

ACRYLICS
STARLIGHT FR

SERGE FERRARI

Preconstraint tension vinyl and solar protection fabrics.

SOLTIS PROOF W96 — *Waterproof option**

SOLTIS PROOF 502 — *Waterproof option**

SOLTIS OPAQUE B92 — *Waterproof option**

SOLTIS HORIZON 86

SOLTIS HARMONY 88

SOLTIS PERFORM 92

**Waterproof refers to fabric only and not the system.*

ADDITIONAL FABRICS*

Sunbrella Acrylics

*Available upon request.

MOTORS

SOMFY® OREA — Torque Sensing Motor

Due to the flexibility of the mounting options for Frame, it can be cantilevered as well as pitched at an angle up to 60°.



Defense

Shade Sail



The Defense Shade Sail draws nautical inspiration, featuring premium materials commonly used in sailing. Its retractable sails embody marine philosophy and technology, providing a sophisticated yet durable shade.



Defense Shade Sail | Outdoor Living Solutions



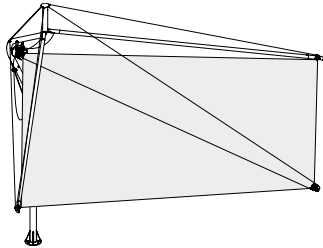
DEFENSE Technical Data



Defense Shade Sail is in a class of its own. A freestanding shade sail consisting of a stainless steel frame and adjustable sail made of white Dacron® canvas that can be rotated up to 360°. It is motorized only and the canvas quickly winds up by using a remote-control. It does come with a CMO (control motor override) feature to manually retract and deploy the sail in case of emergency, such as a power outage. It is also fitted with an anemometer for automatically closing the sail in the event of strong wind. The self-supporting shade structure is composed of two white winding sails on a horizontal mast attached to a curved frame. The white Dacron® canvas is a woven polyester of nautical origin (with a protective treatment against UV rays) with horizontal panels creating clean lines. The sails are also connected to stainless steel supporting arms and tensioned by high tenacity Dyneema ropes. It is supported by a uniquely designed matte finish stainless steel pole and frame. A stainless steel cleaning kit is supplied to maintain the sophisticated frame finish. Down to the last detail, the Defense Shade Sail adds a touch of nautical flair to any outdoor space.

Features

- » SELF-SUPPORTING SHADE SAIL
- » NAUTICAL DESIGN, TECHNOLOGY & COMPONENTS
- » 3 INSTALLATION OPTIONS AVAILABLE
- » SALINITY AND WEAR RESISTANT
- » BRUSHED/POLISHED STAINLESS STEEL FINISH
- » STAINLESS STEEL CLEANING KIT PROVIDED
- » CMO OPERATION (Control Motor Override)
- » ANEMOMETER INCLUDED
- » 360° ROTATION
- » LOW MAINTENANCE



FRAME



STAINLESS STEEL ONLY

FABRIC



DACRON CANVAS
WHITE ONLY

Differences in color tones may occur in this brochure due to production technique, therefore these finish images should not be used for final production specifications.

MOTORS

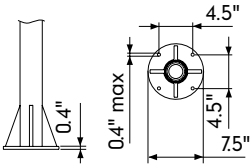
SOMFY 535 CMO (MOTOR OVERRIDE) ONLY

EOLIS RTS SENSOR KIT ANEMOMETER
(MOTOR CONNECTED WIND SENSOR)

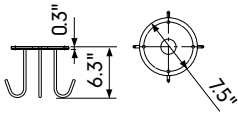
3 installation options:

Anchored to the ground is the standard solution (anchors not supplied), counter plate with prongs embedded in concrete plinth, or ballasted base with optional stainless steel cover. (Ballast blocks not supplied.)

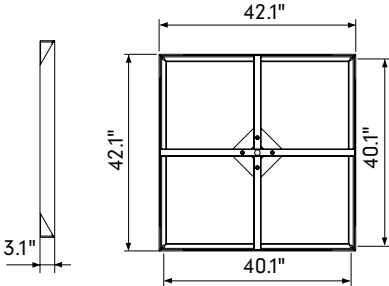
GROUND POLE



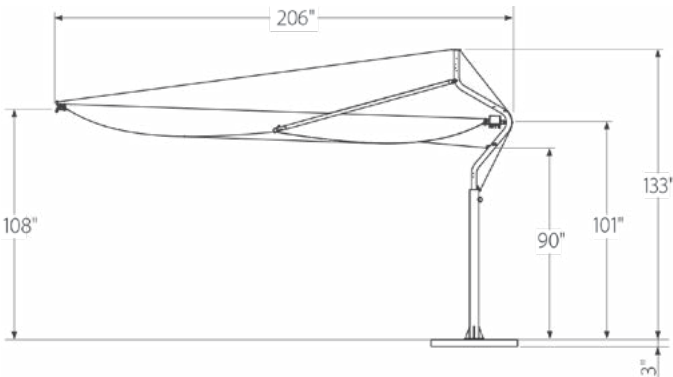
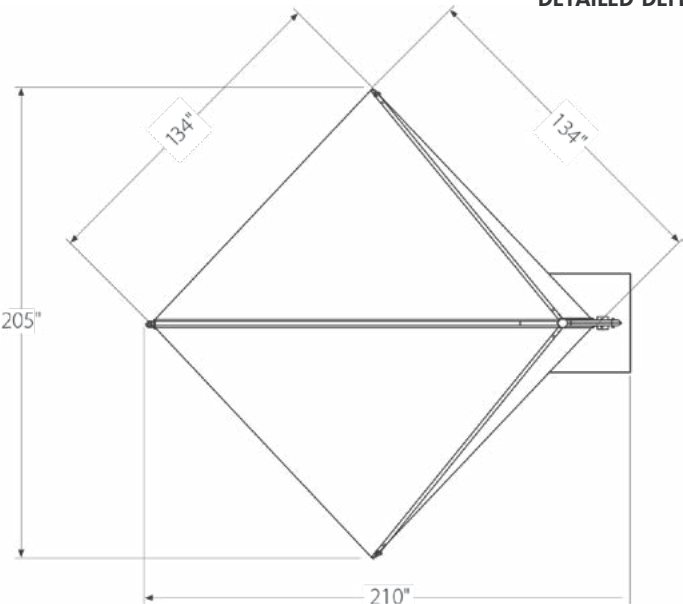
IN-GROUND COUNTER PLATE



BALLASTED BASE



DETAILED DEFENSE MEASUREMENTS





Para Tempotest® USA Acrylic Awning Fabrics

Color and style tell your story to the world. Tempotest® provides you the widest color and pattern selection so your story is uniquely you. Our palate is your playground. For a serene and tranquil setting, explore our blue hues. Feeling confident, bold and passionate? Red is your color choice. Playful orange and yellow evoke happiness, creativity and warmth. Tempotest allows you to express your own colorful personality.

Whatever your story, Tempotest can help you tell it.

Corradi USA's #1 fabric choice for awnings, Tempotest® USA has a stunning selection of solid color acrylic fabrics applicable for awnings, clear vinyl window borders or full exterior screen coverage. These fabrics are created for outdoor living solar protection and custom style.

Tempotest® fabrics integrate perfectly in any outdoor space creating a protection from the sun's UV rays, as well as adding a touch of color and elegance. Tempotest® is the leading acrylic awning fabric collection with the most comprehensive assortment of color options for screens and awnings—including both striped and solid colors—designed to fit any lifestyle.

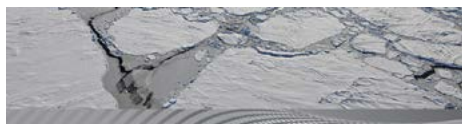
The quality of the solution dyed fiber and the innovative finishing Teflon® Extreme by Para® fabric protector, make Tempotest® fabrics water/oil repellent, resistant to mold, stains, salt and U.V. fading.

Important collaborations with companies of the highest level has led to the creation of special and exclusive products that Para® uses to reach the highest goals.

Most comprehensive collection of stylish colors
Protection from the sun's harsh UV rays
Long term strength and durability
Fade resistant solution dyed fiber
Teflon® Extreme fabric coating protection
Easy maintenance
Certified by the highly respected authorities



www.tempotestusa.com



FABRIC COLLECTION

Dacron Shade Sail Fabric

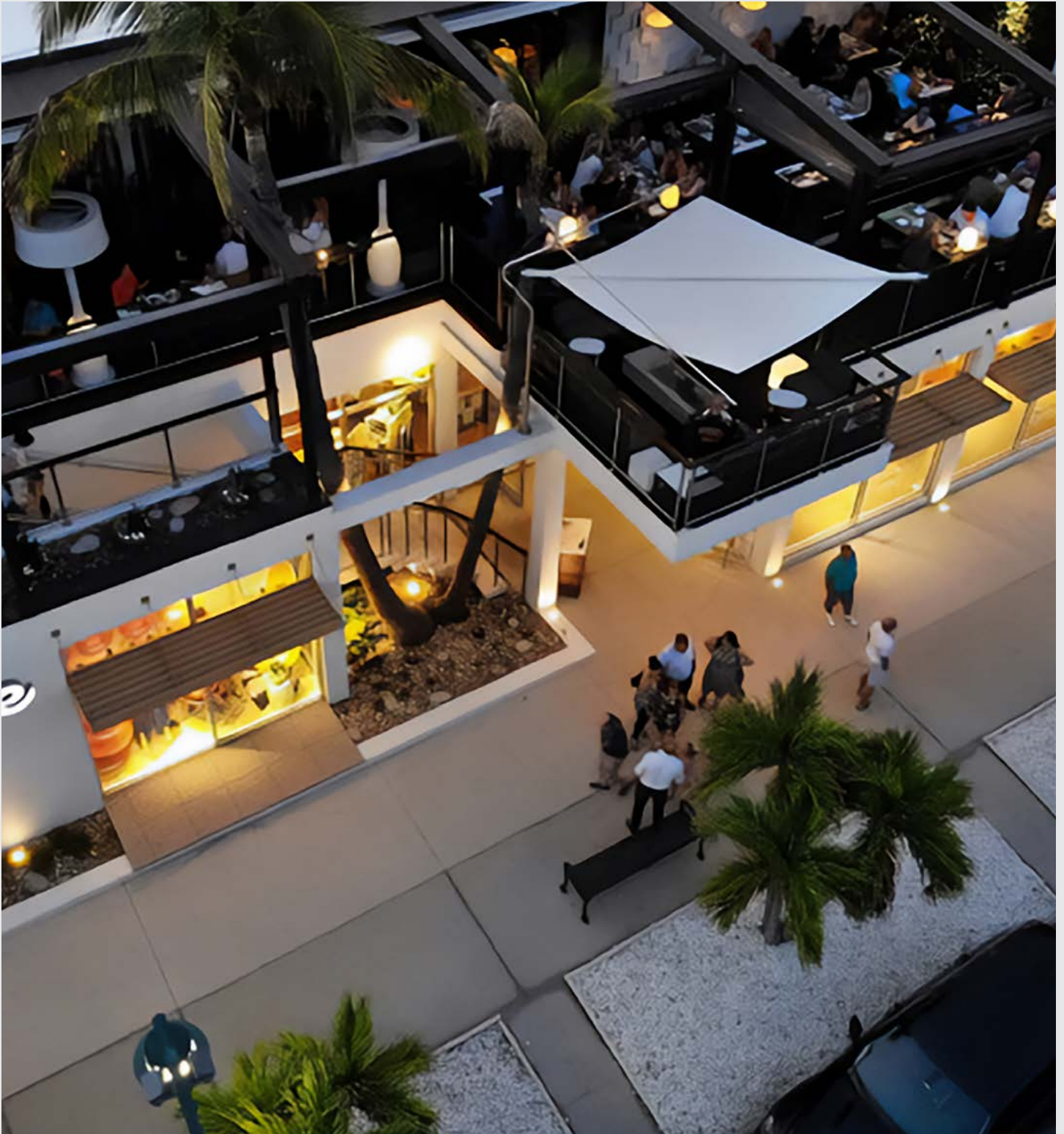
Used on Defense Shade Sail only

White color available only

Fabric weight 11oz. per sq. yd.

100% polyester

Anti-UV finishing





Whether you want to control your exterior solar screens and outdoor shading systems at the touch of a button or use automated systems, Somfy® has the solution for all of your motorization needs.

Somfy®, the world's leading manufacturer of tubular motors, has more than four decades of experience in designing and manufacturing motors and controls, making **Radio Technology Somfy® (RTS)** the ultimate choice for the automation of exterior solar screens and outdoor shading systems. Radio Technology Somfy® (RTS) offers a high performing, reliable solution for exterior solar screen and outdoor shading motorization. Since the radio receiver is integrated within the motor, making RTS the ideal choice for hassle-free installation and quick and easy operation.



SENSORS



Sunis RTS Sensor Kit

This battery-operated, outdoor sensor automatically adjusts Somfy® powered exterior products based on the sun's intensity.

Eolis RTS Sensor Kit

The Eolis 3D WireFree™ RTS Wind Sensor is a wireless, battery powered wind sensor that will automatically retract an awning based on wind generated movements.

Soliris RTS Sensor Kit

The Soliris RTS Sun and Wind Sensor automatically controls your RTS motorized products based on current weather conditions.

TIMER



Chronis RTS Timer

The Telis 1 Chronis RTS combines the functionality of a single channel hand-held control with the convenience of a programmable timer. This control option is compatible with all motorized Radio Technology Somfy® applications and offers simple programming and easy operation.

AUTOMATION CONNECTIVITY



TaHoma® RTS/Zigbee Smartphone and Tablet Interface

TaHoma® is a WiFi to RTS gateway that can control up to 40 RTS channels. Create scenes and schedules using an app while home or away, or integrate with third-party systems. TaHoma works with Google Assistant and Amazon Alexa, allowing for natural voice commands to control shades.

CONTROLS



RTS Remotes

The RTS remote is a convenient hand-held remote for use with any motorized product featuring Radio Technology Somfy®. It is available in a variety of colors and channels. (1 channel, 4 channel, 16 channel)

Soliris 5 Channel Remote

The Telis Soliris RTS is a hand-held remote to operate awnings, screens and shutters featuring Radio Technology Somfy®. It also has the added feature of activating an RTS sun sensor remotely.

Decoflex Wall Switch Remote

The DecoFlex WireFree™ RTS is battery-powered and a completely wireless wall switch that provides an ideal way to control motorized products when entering or exiting a room. It is compatible with all Radio Technology Somfy® motorized products and is available in a variety of colors and channels.

MOTOR CORDS

Somfy® offers many options for motor cords, including RTS vs Standard and plug vs no plug. The Standard Cord length for Somfy® Motors is 6' without a plug. Optional sizes may range from 3', 6', 10', 18' to 24'.

MOTOR VS MANUAL

When choosing between motorized or manually operated systems, it helps to know that motorization technology has been successfully in use for several decades and has only improved with technological advancements. Operating outdoor shading systems with a motor and adding automation features such as a sun sensor, wind sensor or even integrating the motor with home automation is extremely easy.

Corradi USA offers only the best in motorized technology, which is why we choose Somfy motors to operate our shading systems such as the Klip, Klip Pod, Svet, Shan, Feng, Frame, and Defense. We do offer one awning with a manual option, the Klip.

To help you make your decision for the best operation method for your outdoor awning, below are the benefits of motorized vs manual.



WHY MOTORIZED?

Necessity. Most outdoor shade awnings are only offered motorized due to size, weight, and repeated use of systems.

Easy use. Push button operation by remote control or wall switch.

Access and ability. Whether located high up on a wall or maneuvering an exceptionally large shading system, motorization may be the only method of effective operation.

Value and efficiency. When shading systems are motorized, they are actually used more often because of how easy they are to operate. Especially when operating multiple systems.

Automation and modern lifestyle. Sensors that provide optimum protection can be added to automatically operate the system depending on weather conditions. Technological features in homes and buildings are increasingly integrated into automated solutions for synchronized convenience and style.

Price and reliability. The cost of adding a motorized solution to your shading system is not a significant cost in terms of the overall cost of the system. The motors offered today have the latest technology that has been developing for over 30 years worldwide. The functionality and warranties offered with motorization options today make this an easy purchasing decision.

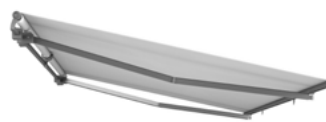
WHY MANUAL?

Economical. A manually operated system can save you money by being a no frills, least expensive method to add comfortable shading to your outdoor environment.

No electricity available. When the location you wish to shade does not allow for an electrical connection for a motorized system.

Eco-friendly. The ability to conserve energy is possible by choosing a completely manual system.

Product Comparison Overview



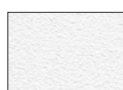
Klip / Klip Pod 

Svet 

Shan 

Size/Coverage (width x projection)	Klip: 30'(360") x 11'6"(138") Klip Pod: 17'8"(212") x 11'6"(138")	30'(360") x 13'6"(162")	23'(276") x 13'6"(162")
Pitch Range	Klip & Klip Pod: 5° - 65°	3° - 60°	3° - 40°
Retracted System Dimensions	Klip min. pitch 5°: 8.8"p x 9.8"h, max. pitch 65°: 10.1"p x 10.5"h	Svet min. pitch 3°: 8.1"p x 8.9"h, max. pitch 60°: 9.8"p x 9.3"h	7.3"p x 10.2"h
Frame Colors	White Quartz, Carbon, Granite.	White Quartz, Carbon, Granite, Corten.	White Quartz, Carbon, Granite, Corten.
Available Fabrics	Tempotest awning fabrics, Sunbrella awning Fabrics.	Tempotest awning fabrics, Sunbrella awning Fabrics.	Tempotest awning fabrics, Sunbrella awning Fabrics.
Method of Operation	Manual and motorized options.	Motorized and CMO available.	Motorized only.
Installation Type Options	Wall mount / ceiling-soffit mount.	Wall mount / ceiling-soffit mount.	Wall mount only.
Motor Type	Somfy 500 Series RTS.	Somfy 500 Series RTS (option for CMO).	Somfy Orea Torque sensing motor.
Automation Options	Wind & sun, wind detection, timers, home automation integration ability.	Wind & sun, wind detection, timers, home automation integration ability.	Wind & sun, wind detection, timers, home automation integration ability.
Other Unique Options and Features	Hood option (For Klip only, not Klip Pod).	Hood option. Front bar LED lighting option.	-
Product Warranty	5 years	5 years	5 years
Motor Warranty	5 years	5 years	5 years

Standard Frame Colors



WHITE QUARTZ



ANTHRACITE



CARBON



GLACIER



BEACH SAND



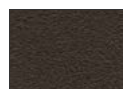
DUNE



GRANITE



CORTEN



URBAN BRONZE

Defense Frame Color



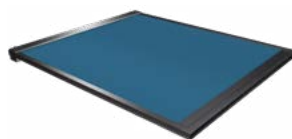
BRUSHED STAINLESS STEEL



Differences in color tones may occur in this brochure due to reproduction technique, therefore these finish images should not be used for final production specifications.



Feng



Frame



Defense

	Feng	Frame	Defense
Size/Coverage (width x projection)	23'(276") x 11'6"(138")	Frame: 236"(19'8") x 236"(19'8") Frame Stand: 197"(16'5") x 197"(16'5")	11'2"(134") x 11'2"(134")
Pitch Range	3° - 45° regular arm, 3° - 35° LED arm	0° - 60°	No pitch. 360° rotation.
Retracted System Dimensions	wall: 9.6"p x 8.8"h, soffit: 10.4"p x 10.7"h	–	–
Frame Colors	White Quartz, Carbon, Granite, Corten.	White Quartz, Carbon, Granite, Corten.	Brushed stainless steel (only).
Available Fabrics	Tempotest awning fabrics, Sunbrella awning fabrics.	Tempotest solid awning fabrics (up to 15'x15'), Tempotest Starlight Blue, Serge Ferrari Soltis Precontraint collection (86, 88, 92, 502, & W96).	Dacron (available in white only).
Method of Operation	Motorized only.	Motorized only.	Manual and motorized.
Installation Type Options	Wall mount only.	Frame mounts to surface with foot-brackets. Frame Stand mounts with back wall brackets and a front supporting structure.	Ground pole, in-ground counter plate, ballasted base (all freestanding).
Motor Type	Somfy Orea Torque sensing motor.	Somfy Orea Torque sensing motor.	Somfy 535 RTS CMO.
Automation Options	Wind & sun, wind detection, timers, home automation integration ability.	Wind & sun, wind detection, timers, home automation integration ability.	Wind & sun, wind detection, timers, home automation integration ability.
Other Unique Options and Features	Front Bar LED lighting option. Arm LED lighting option.	Side-track zipper to keep fabric taut.	Anemometer included standard.
Product Warranty	5 years	5 years	5 years
Motor Warranty	5 years	5 years	5 years

Why Corradi?



For over 40 years we have been designing solutions that allow you to enjoy and enhance outdoor spaces, and for over 10 years we have extended our solutions to the USA. We have come a long way from the small artisanal workshop in 1978 to today's factories that use the best production technologies and distribute products throughout the world. We were the first to patent the product that embodies the archetype of shading, the perfect combination of a pergola and a sun shade. In addition to Pergotenda®, we also offer louvered roof pergolas, exterior screens, awnings, and various unique shading systems. With our exceptional quality, versatile designs, and commitment to innovation, we guarantee that our shading solutions will elevate your outdoor living experience. We put ourselves in your shoes and ask ourselves—

“Why Corradi?”

- We have numerous patents that guarantee exclusivity and technical expertise.
- Pergotenda® is made only by Corradi.
- We have over 40 years of dedicated experience with outdoor spaces.
- Our products are high quality, innovative, and custom made.
- Italian design is our signature.
- We offer a wide range of products and services that are constantly evolving.
- From the design phase to manufacturing and installation, we provide support in all aspects of project management.
- Our Dealers are chosen, authorized, and trained to be the best.
- We believe in the uniqueness of people and products.
- Our mission is to empower you to fully enjoy your outdoor living space.







General Coordination & Contents by
Corradi USA/EU Marketing & Communications
Priscilla Olivas
Pierce Hunt
Lucrezia Bonfili

Photography provided by Corradi USA, ShadeLab, and the following dealers:

Advanced Blinds and Awnings, Coeur d'Alene ID
Artivo Shades, ON, Canada
Blind Appeal, Nampa ID
Budget Blinds of Wichita Falls, Wichita Falls TX
Conroe Awning and Screen, Conroe TX
Elevated Surfaces, Lavon TX
New Haven Awning, New Haven CT
Opdyke Awnings, Belmar NJ
Outdoor Living Solutions, London ON, Canada
PureTech Window Fashion, Camino Island WA
Ross Howard, Dallas TX

Special thanks to
Our Dealers for the support

Printing
Digital Marketing & Print Solutions

credits

DISCLAIMER: This brochure, the information, technical features, product descriptions, names, images, photographs, reproductions, trademarks contained herein are an exclusive property of Corradi Srl & Corradi USA and are subject to the according norms for trademarks, patents, royalties, intellectual property and unfair competition. Without written authorization by Corradi, any reproduction, even partial, of the information, technical features, descriptions, names, images, photographs, trademarks in this brochure is prohibited. The manufacturer may modify or improve the products in this brochure without dispute. Differences in color tones in this brochure may occur and depend on the reproduction technique.

THE
outdoor
ALCHEMIST

Corradi USA
1910 N Josey Lane, Carrollton, TX 75006
T +1 800 882 8393
info@corradiusa.com
corradiusa.com

